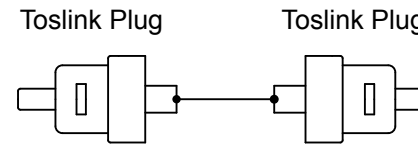
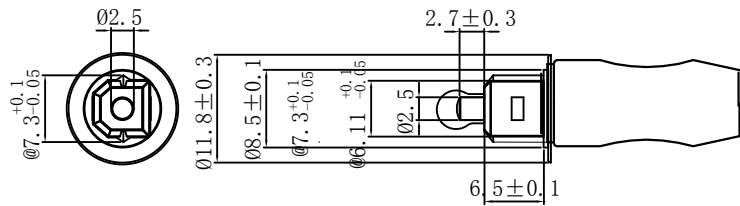
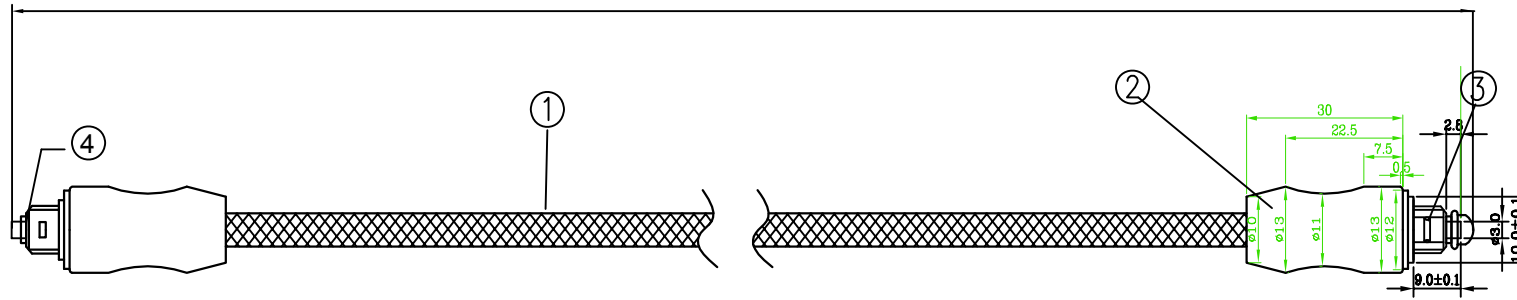
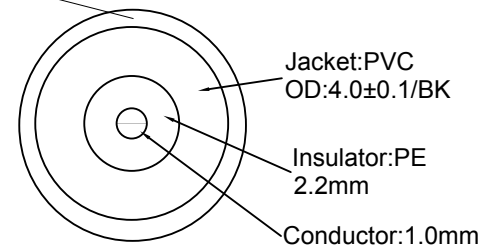
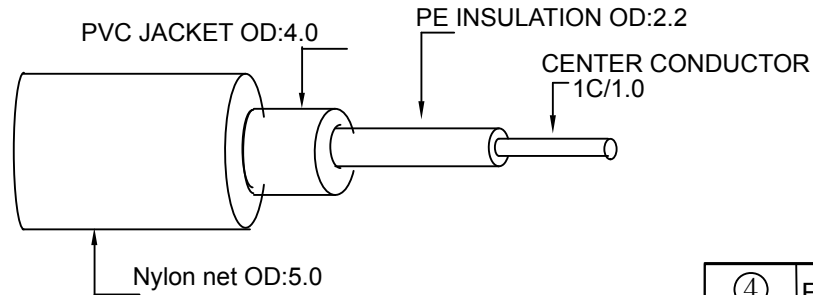


1m



Nylon net OD:5.0±0.1



ELECTRICAL TESTING:100% Test.

④	Fiber Terminal	2PCS	Brass GOLD PLATED
③	Toslink MALE	2PCS	Toslink Plug (ABS Molding /Black)
②	Connector shell	2PCS	Zn alloy connector shell
①	CABLE	1PCS	CENTER CONDUCTOR +PE INSULATION +PVC JACKET +Nylon Net OD:5.0 mm
NO.	PARTS NAME	Q'TY	SPECIFICATION

APPROVED	CHECKED	DRAWN	CUSTOMER:	
			ITEM NO.	TOTO-11-K
			DRAW NO.	
			UNIT	mm
			SCALE	NONE

DESCRIPTION:

Toslink MALE ---Toslink MALE

